

Elos Accurate®		IO Scan Body	Analog for Printed Models	Model Analog	Model Analog Tool	Hybrid Base Engaging	Margin width & gingiva height	Hybrid Base Non-Engaging	Margin width & gingiva height	Prosthetic screw for straight channels	Prosthetic screw - hexalobular	Torque	
Implant System	Platform						Ø GH		Ø GH				
		IO	PMA	MA	AT	HBE	Size:	HBN	Size:	AS	Screwdriver:	AS hexalobular	Ncm:
BH	BioHorizons Internal Hex	3.0	PMA-BHI30-1										
		3.5	PMA-BHI35-1										
		4.5	PMA-BHI45-1										
		5.7	PMA-BHI57-1										
CAMLOG	Camlog®	3.3	PMA-CAS33-1	MA-CAS33-1	AT-16-1								
		3.8	PMA-CAS38-1	MA-CAS38-1									
		4.3	PMA-CAS43-1	MA-CAS43-1									
		5.0	PMA-CAS50-1	MA-CAS50-2									
		6.0	PMA-CAS60-1										
	Camlog® Bar Abutment	3.3-4.3	PMA-CBA43-1	MA-CBA43-1	AT-16-1			HBN-CBA43-1	Ø5/GH 1.5mm		AS-CBAM1604A-1	15 Ncm	
DENTSPLY	Astra Tech TX	3.0	PMA-ATO30-1	MA-ATO30-1	AT-14-1	HBE-ATO30-1	Ø 3.4/GH 0.88mm			AS-ATOM148POS	"0.050" Hex screwdriver	AS-ATOM1408A-1	15 Ncm
		3.5/4.0	PMA-ATO35-1	MA-ATO35-1	AT-16-1	HBE-ATO35/40-1	Ø 3.7/GH 0.52mm			AS-ATOM168POS		AS-ATOM1608A-1	20 Ncm
		4.5/5.0	PMA-ATO45-1	MA-ATO45-1	AT-20-1	HBE-ATO45/50-1	Ø 4.5/GH 0.7mm			AS-ATOM210POS		AS-ATOM2010A-1	25 Ncm
	Astra Tech EV	3.0	PMA-ATE30-1	MA-ATE30-1	AT-14-1	HBE-ATE30-1	Ø 3.5/GH 1.0mm			AS-ATEM148POS	"0.050" Hex screwdriver	AS-ATEM1408A-1	25 Ncm
		3.6	PMA-ATE36-1	MA-ATE36-1	AT-16-1	HBE-ATE36-1	Ø 3.7/GH 1.0mm			AS-ATEM168POS		AS-ATEM1608A-1	
		4.2	PMA-ATE42-1	MA-ATE42-1	AT-18-1	HBE-ATE42-1	Ø 4.5/GH 1.0mm			AS-ATEM188POS		AS-ATEM1808A-1	
		4.8	PMA-ATE48-1	MA-ATE48-1	AT-20-1	HBE-ATE48-1	Ø 4.5/GH 1.0mm			AS-ATEM208POS		AS-ATEM2008A-1	
	5.4	PMA-ATE54-1	MA-ATE54-1	HBE-ATE54-1		Ø 5.0/GH 1.0mm							
	Astra Tech Profile EV	4.2	PMA-ATE42P-1	MA-ATE42P-1	AT-18-1								
	Astra Tech UniAbutment EV	4.8	PMA-ATE48P-1	MA-ATE48P-1	AT-20-1								
Xive®	UA33°	PMA-AUE33-1	MA-AUE33-1	AT-18-1				HBN-AUE33-1	Ø 5.0/GH 0.95mm		AS-AUEM1805A-1	15 Ncm	
	3.0	PMA-DXI30-1	MA-DXI30-1	AT-14-1									
	3.4	PMA-DXI34-1	MA-DXI34-1	AT-16-1									
	3.8	PMA-DXI38-1	MA-DXI38-1										
	4.5	PMA-DXI45-1	MA-DXI45-1										
5.5	PMA-DXI55-1												
NEOSS	Neoss® Access Abutment		PMA-NAC40-1	MA-NAC40-1	AT-20-1								
	Neoss Implant System	3.25	PMA-NIS33-1	MA-NIS33-1	AT-16-1								
NOBEL BIOCARE	Brånemark System	3.3/3.5 NP	PMA-BRA35-1	MA-BRA35-1	AT-16-1								
		3.75/4.0 RP	PMA-BRA41-1	MA-BRA41-1	AT-20-1								
		5.0/5.5 WP	PMA-BRA51-1	MA-BRA51-1	AT-25-1								
	Nobel Biocare® Conical Connection and NobelActive®	3.0	PMA-NBA30-1	MA-NBA30-1	AT-14-1	HBE-NBA30-1	Ø 3.4/GH 0.6mm			AS-NBAM1407POS	Nobel Biocare Unigrip	AS-NBAM1407A-1	15 Ncm
		3.5/3.75 NP	PMA-NBA35-1	MA-NBA35-1	AT-16-1	HBE-NBA35-1	Ø 3.7/GH 0.9mm	HBN-NBA35-1	Ø 5.0/GH 1.8mm	AS-NBAM168POS		AS-NBAM1608A-1	
		4.3/5.0 RP	PMA-NBA43-1	MA-NBA43-1	AT-20-1	HBE-NBA43-1	Ø 4.5/GH 0.9mm	HBN-NBA43/50-1	Ø 5.0/GH 1.0mm	AS-NBAM207POS		AS-NBAM2007A-1	35 Ncm
	5.5 WP	PMA-NBA60-1	MA-NBA60-1	HBE-NBA60-1		Ø 4.5/GH 0.7mm	HBN-NBA60-1	Ø 5.7/GH 1.0mm					
	Nobel Biocare® Multi-Unit Abutment	NP/RP	PMA-MUA45-1	MA-MUA45-1	AT-14-1			HBN-MUA45-1	Ø 5.0/GH 0.9mm	AS-MUAM1403POS		AS-MUAM1403A-1	15 Ncm
		WP	PMA-MUA60-1	MA-MUA60-1	AT-18-1			HBN-MUA60-1	Ø 5.7/GH 1.25mm	AS-MUAM1804POS		AS-MUAM1804A-1	
	NobelReplace®	3.5 NP	PMA-NBR35-1	MA-NBR35-1	AT-18-1	HBE-NBR35-1	Ø 4.5/GH 0.5mm	HBN-NBR35-1	Ø5/GH 1.0mm	AS-NBRM1808POS	Nobel Biocare Unigrip	AS-NBRM1808A-1	35 Ncm
4.3 RP		PMA-NBR43-1	MA-NBR43-1	AT-20-1	HBE-NBR43-1	Ø 4.5/GH 0.135mm	HBN-NBR43-1	Ø5/GH 0.6mm					
5.0 WP		PMA-NBR50-1	MA-NBR50-1		HBE-NBR50-1	Ø 5.0/GH 0.2mm	HBN-NBR50-1	Ø5.7/GH 0.6mm	AS-NBRM2010POS	AS-NBRM2010A-1			
6.0		PMA-NBR60-1	MA-NBR60-1	HBE-NBR60-1	Ø 6.0/GH 0.4mm	HBN-NBR60-1	Ø7/GH 0.8mm						
STRAUMANN	Straumann® Bone Level	3.3 NC	PMA-SBO33-1	MA-SBO33-1	AT-16-1	HBE-SBO33-1	Ø 3.5/GH 0.8mm	HBN-SBO33-1	Ø 5.0/GH 1.67mm	AS-SBOM1608POS	SCS screwdriver	AS-SBOM1608A-1	35 Ncm
		4.1/4.8 RC	PMA-SBO41-1	MA-SBO41-1		HBE-SBO41/48-1	Ø 4.1/GH 0.8mm	HBN-SBO41/48-1	Ø 5.0/GH 1.25mm				
	Straumann® Screw-retained Abutment	3.5	PMA-SSA35-1					HBN-SSA35-1	Ø 5.0/GH 1.0mm		AS-SSAM1404A-1	15 Ncm	
Straumann® Standard and Standard Plus	4.6	PMA-SSA46-1					HBN-SSA46-1	Ø 5.0/GH 0.9mm					
	3.5 NNC	PMA-SSY48-1	MA-SSY48-1	AT-20-1									
	4.8 RN	PMA-SSY65-1	MA-SSY65-1										
6.5 WN													
ZIMMER BIOMET	Certain® Internal Connection	3.4	PMA-BCE34-1	MA-BCE34-1	AT-16-1								
		4.1	PMA-BCE41-1	MA-BCE41-1									
		5.0	PMA-BCE50-1	MA-BCE50-1									
		6.0	PMA-BCE60-1	MA-BCE60-1									
	External Hex Connection	3.4	PMA-BEH34-1	MA-BEH34-1	AT-20-1								
		4.1	PMA-BEH41-1	MA-BEH41-1									
		5.0	PMA-BEH50-1	MA-BEH50-1									
Tapered Screw-Vent® Implant	3.5	PMA-ZSV35-1	MA-ZSV35-1	AT-18-1									
	4.5	PMA-ZSV45-1	MA-ZSV45-1										
	5.7	PMA-ZSV57-1	MA-ZSV57-1										
Price		\$ 70	\$ 35	\$ 35		\$ 70		\$ 70		\$ 29		\$ 35	

Important information about IO and IO SA We have started a project of phasing out the mark of SA from our article numbers. This change means no difference in the physical product, and the same library as previously shall be used in the software. As of October 1, 2018, the libraries have been updated too, for example, IO 3A-B/IO 3A-B SA. *The only scan body that will not be affected by this update are the ones used for Nobel Active/ CC, which will continue to have two choices for each platform, with and without the SA designation. In these cases, it is important to choose the same version in the library as on the product used, whether used intraorally or in the lab.

Instruments for Elos Accurate® Distributed by Vulcan for the US market

Instruments for scan body	Art No
Elos Accurate® Scan Body Driver 16 mm	C18512
Elos Accurate® Scan Body Driver 25 mm	C13485
Elos Accurate® Scan Body Driver 92 mm	C13048
Price	\$ 69

Screwdrivers for Customized Abutments	Art No
Elos Accurate® Prosthetic Screwdriver RA-connection 18 mm	PS-AH18-1
Elos Accurate® Prosthetic Screwdriver RA-connection 26 mm	PS-AH26-1
Elos Accurate® Prosthetic Screwdriver RA-connection 34 mm	PS-AH34-1
Price	\$ 60

Instruments for Analog for Printed Models	Art No	Price
EI Accurate® Analog Pliers	PMA-AIT-1	\$ 140
Elos Accurate® Analog Insertion Pin	PMA-AIP-2	\$ 40
Elos Accurate® Analog Insertion Screw	PMA-AIS-5	\$ 35

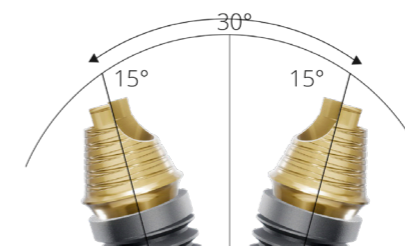
Elos Accurate® Hybrid Base™ Engaging and Non-Engaging



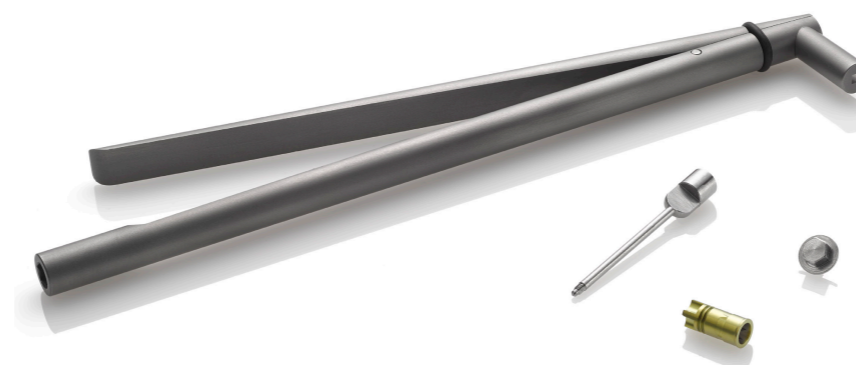
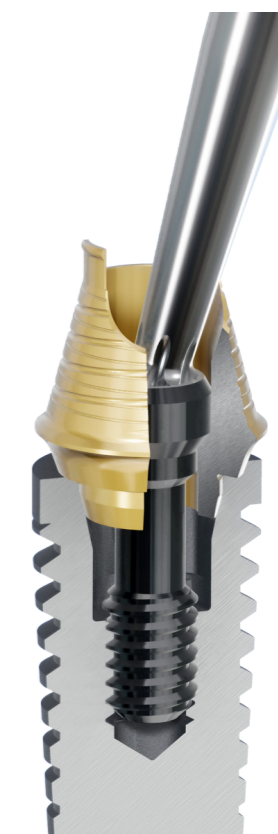
Angulation possibilities up to 28°

The Elos Accurate Hybrid Base must be combined with a prosthetic screw. If you create a crown with an angulated screw channel, it must be combined with the Elos Accurate Hexalobular Prosthetic Screw. For straight screw channels, you can choose to use the Elos Prosthetic Screw with the same screw head as the implant manufacturer.

The angulation of Elos Accurate Hybrid Base Engaging has been developed so that the hexalobular screw is embedded in the restoration; you cannot remove the screw from the crown after cementing.



The angle of the cone allows divergent implants up to 30°. The U-formed design on the upper part of the hybrid base enables smooth passage for the screw and screwdriver in angled situations.



TO ORDER OR FOR MORE INFORMATION CALL
1.844.484.2301 OR EMAIL
info@vulcandental.com

2300 Riverchase Center,
Suite 825
Birmingham, AL 35244
www.vulcandental.com