

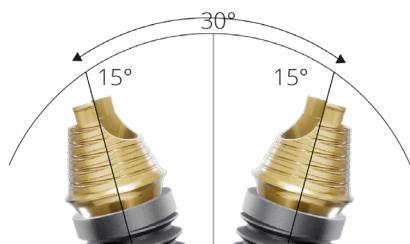
## ANGULATION GUIDE (RECOMMENDATIONS)

### Elos Accurate® Hybrid Base™ Non-Engaging

#### Angulation possibilities up to 28°

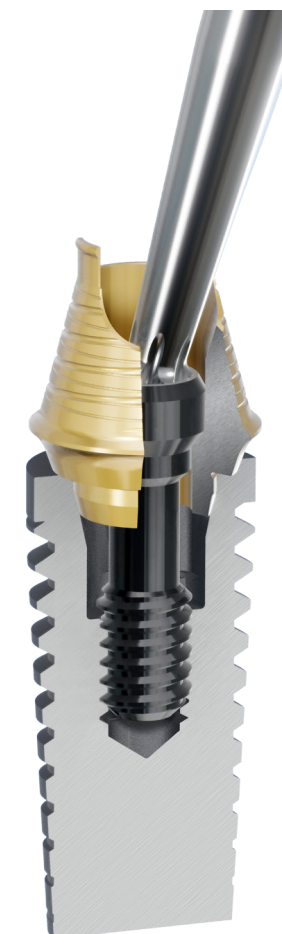
The Elos Accurate Hybrid Base Non-Engaging must be combined with a prosthetic screw. If you create a bridge with an angulated screw channel, it must be combined with the Elos Accurate Hexalobular Prosthetic Screw. For straight screw channels, you can choose to use the Elos Prosthetic Screw with the same screw head as the implant manufacturer.

If the following guidelines for maximum angling are kept, the screw can be easily removed and returned to the bridge construction.



The angle of the cone allows divergent implants up to 30°. The U-formed design on the upper part of the hybrid base enables smooth passage for the screw and screwdriver in angled situations.

System	Angle
Nobel Biocare® Active/Conical Connection 3.5 NP	20°
Nobel Biocare® Active/Conical Connection 4.3/5.0 RP	15°
Nobel Biocare® Active/Conical Connection 6.0 WP	20°
Nobel Biocare® Brånemark System® NP	28°
Nobel Biocare® Brånemark System® RP	28°
Nobel Biocare® Brånemark System® WP	28°
Nobel Replace® 3.5 NP	15°
Nobel Replace® 4.3 RP	10°
Nobel Replace® 5.0 WP	10°
Nobel Replace® 6.0	10°
Nobel Biocare® Multi-Unit (MUA) NP/RP	28°
Nobel Biocare® Multi-Unit (MUA) WP	28°
Straumann® Standard RN	28°
Straumann® Standard WN	28°
Screw-retained Abutment for Straumann® Bonelevel 3.5	28°
Screw-retained Abutment for Straumann® Bonelevel 4.6	28°
Straumann® Bone Level NC	28°
Straumann® Bone Level RC	28°
Astra Tech Implant System™ Uni Abutment 20°	28°
Astra Tech Implant System™ Uni Abutment 45°	28°
Astra Tech Implant System™ Uni Abutment EV 33°	28°
Dentsply Ankylos® Balance Base	28°
Zimmer Screw-Vent® 3.5	10°
Zimmer Screw-Vent® 4.5	10°
Zimmer Screw-Vent® 5.7	10°
Camlog® Bar Abutment	28°



## ANGULATION GUIDE (RECOMMENDATIONS)

### Elos Accurate® Hybrid Base™ Engaging

#### Angulation possibilities up to 28°

The Elos Accurate Hybrid Base Engaging must be combined with a prosthetic screw. If you create a crown with an angulated screw channel, it must be combined with the Elos Accurate Hexalobular Prosthetic Screw. For straight screw channels, you can choose to use the Elos Prosthetic Screw with the same screw head as the implant manufacturer.

The angulation of Elos Accurate Hybrid Base Engaging has been developed so that the hexalobular screw is embedded in the restoration; you cannot remove the screw from the crown after cementing.

System	Angle
Nobel Biocare® Active/Conical Connection 3.0	15°
Nobel Biocare® Active/Conical Connection 3.5 NP	15°
Nobel Biocare® Active/Conical Connection 4.3/5.0 RP	15°
Nobel Biocare® Active/Conical Connection 6.0 WP	15°
Nobel Biocare® Brånemark System® NP	28°
Nobel Biocare® Brånemark System® RP	28°
Nobel Biocare® Brånemark System® WP	28°
Nobel Replace® 3.5 NP	25°
Nobel Replace® 4.3 RP	25°
Nobel Replace® 5.0 WP	25°
Nobel Replace® 6.0	25°
Astra Tech Implant System™ OsseoSpeed® TX 3.0	28°
Astra Tech Implant System™ OsseoSpeed® TX 3.5/4.0	20°
Astra Tech Implant System™ OsseoSpeed® TX 4.5/5.0	20°
Astra Tech Implant System™ OsseoSpeed® EV 3.0	15°
Astra Tech Implant System™ OsseoSpeed® EV 3.6	15°
Astra Tech Implant System™ OsseoSpeed® EV 4.2	15°
Astra Tech Implant System™ OsseoSpeed® EV 4.8	15°
Astra Tech Implant System™ OsseoSpeed® EV 5.4	15°
Straumann® Bone Level NC	15°
Straumann® Bone Level RC	15°
Straumann® Standard RN	25°
Straumann® Standard WN	25°
Biomet 3i® Certain 3.4	15°
Biomet 3i® Certain 4.1	15°
Biomet 3i® Certain 5.0	15°
Biomet 3i® Certain 6.0	15°
Zimmer Screw-Vent® 3.5	20°
Zimmer Screw-Vent® 4.5	20°
Zimmer Screw-Vent® 5.7	28°

