

BioHorizons CAD-CAM Bars 3Shape Library Rev F Release Notes

What's New

- Angulated screw channel up to 25° added for multi-unit bars
- Expanded scope of supported scan bodies

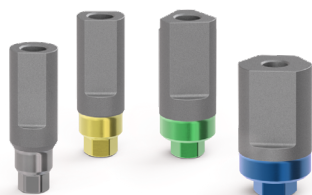
Supported Components



Connections

- Implant Level: BioH 3.0mm, 3.5mm, 4.5mm, 5.7mm
- Abutment Level: BioHorizons Multi-Unit

○ Implant level:



BioHorizons Titanium
Scan Bodies



Elos IO (IO-11A-x)



3Shape (BI3, BIY, BIG, BIB)

○ Abutment level:



BioHorizons Titanium
Scan Bodies (PXMUTSB)



Open Implants (3915)



Elos IO (IO-11B-A)



Imetric MU

For photogrammetry workflows:



PXMUCC



PXMUCCC



Micron Mapper
One-Piece



Micron Mapper
Two-Piece

S
c
a
n

B
o
d
i
e
s

Revision History

Rev E

- updated analog retention meshes

Rev D

- added BioHorizons Titanium Scan Bodies

Rev C

- added Open Implants 3915 to MU library

Rev B

- updated MU inner limit file to prevent thickness error
- updated Imetric scan body geometry
- added IO-11A-A as a 3.0mm implant level scan body

Rev A - initial release