

**VULCAN**  
CUSTOM DENTAL

Simpli**Smile**<sup>™</sup>

Smile, your day just got easier!







# SimpliSmile<sup>™</sup> | Smile, your day just got easier!

SimpliSmile is a comprehensive and modular solution that simplifies workflows by integrating treatment planning and manufacturing services, delivering a complete, all-in-one customized case to your doorstep.

Vulcan Custom Dental is dedicated to supporting you every step of the way, from your digital or analog records to the creation of custom temporary provisionals. Their highly trained sales representative team is always on hand to ensure you receive the best possible service throughout the entire process.





# Customizable cases

SimpliSmile offers single-unit to full-arch cases to cover all your surgical and prosthetic needs.



## Surgical guides

Customizable cases that include single- to multi-unit guides



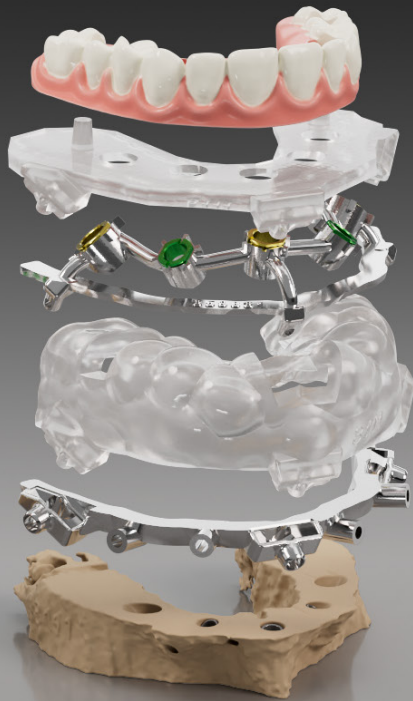
## MagnetiX™ stackable solution

Full-arch stackable magnetic guide technology



## GuidedSMILE™ stackable solution

Full-arch patented metal stackable guides

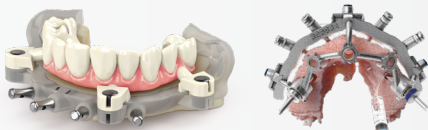
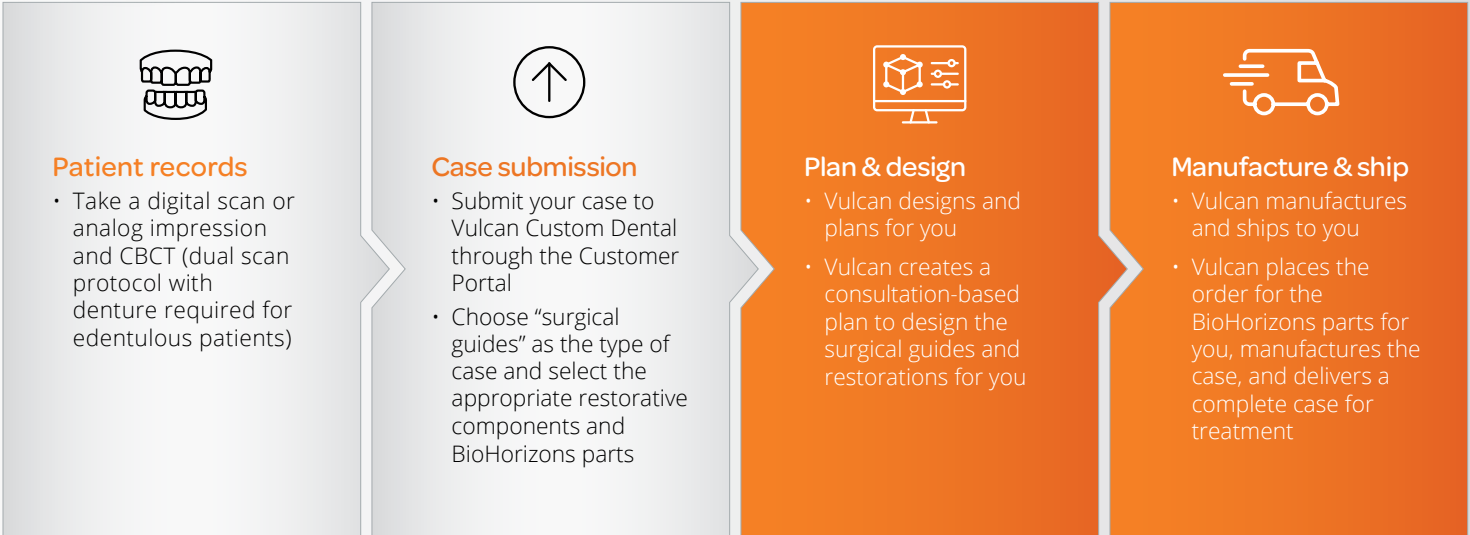


# Workflow

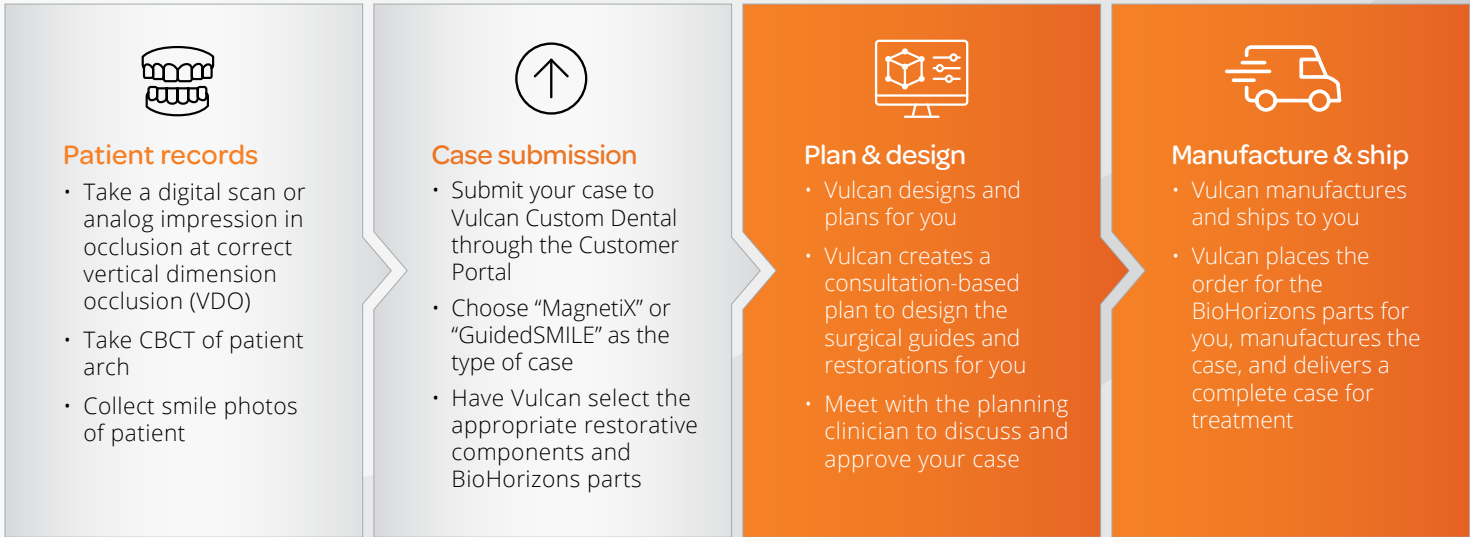
Wherever you are on your digital journey, SimpliSmile puts your mind at ease with its fully integrated workflow. Vulcan designs, manufactures and ships to you.



## Surgical guide workflow



## Full-arch stackable guide workflow



**How to register an account**  
If you are a new customer, please scan the QR code and watch this video to learn more about how to register for an account with us.



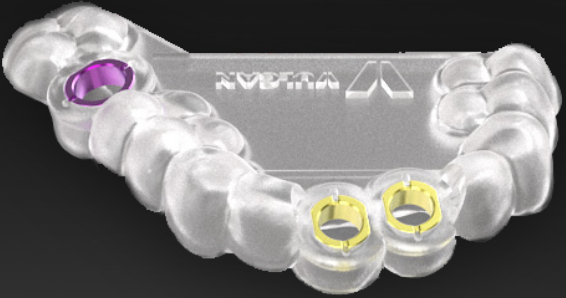




# Surgical guides

## Single- to multi-unit cases at your doorstep

Customizable solutions that include single- to multi-unit guides. SimpliSmile includes your selected BioHorizons implants, restorative components and optional temporary custom provisionals.



### Your case, your choice

Here are some solutions you can choose from, though you are not limited to these options when submitting a case.

#### Surgical guide + Custom titanium healing abutment

Surgical guide  
Custom titanium healing abutment  
BioHorizons implants

#### Surgical guide + Custom PMMA healing abutment

Surgical guide  
Custom PMMA healing abutment  
Ti-base  
BioHorizons implant

#### Surgical guide + full-contour provisional

Surgical guide  
PMMA full-contour temporary crown  
Ti-base  
BioHorizons implants

#### Surgical guide + SmartShape Healer

Surgical guide  
BioHorizons SmartShape Healer  
BioHorizons implants





Full-arch solutions

# MagnetiX™

STACK UP THE SMILES



3DDX MagnetiX offers innovative stackable surgical guides that leverage advanced magnetic technology. These guides are self-aligning, ensuring quick and easy insertion without the need for external removable parts that could break or fall off. This design simplifies the assembly and disassembly process, making it more efficient and user-friendly.

Additionally, 3DDX MagnetiX includes a drill deviation detection feature to enhance precision during surgical procedures. Designed by prosthodontists, these guides support a fully digital workflow, ensuring seamless integration into modern dental practices.

Package options

The components included in each case vary depending on the package you choose.

Guided Full Mouth Rehabilitation

Vulcan guides & components

- Flap guide
- Pin positioning guide
- Bone reduction guide
- Implant guide
- Provisional
- Duplicate
- Block out gasket

BioHorizons parts & restorative components

- Implants
- Multi-unit abutments
- Screws
- Temporary cylinders

Guided reduction

Vulcan guides & components

- Pin positioning guide
- Bone reduction guide

BioHorizons parts & restorative components

- Implants
- Multi-unit abutments
- Screws
- Temporary cylinders

Stackable

Vulcan guides & components

- Flap guide
- Pin positioning guide
- Bone reduction guide
- Implant guide
- Duplicate

BioHorizons parts & restorative components

- Implants
- Multi-unit abutments
- Screws
- Temporary cylinders



Flap guide

The flap guide is used to determine the extensions of the flap distal vertical incisions to ensure complete seating of the following bone supported guide. It may be seated on the remaining teeth and/or the soft tissue.

Pin positioning guide

The pin positioning guide aids in indexing the bone reduction guide to perform fixation pin osteotomy. This guide can be used on the existing anatomy:

Teeth-supported

Relies on existing teeth for stabilization during the placement of dental implants

Bone-supported

Directly supported by the bone structure, used when teeth are absent

Teeth/Bone-supported

Utilizes both remaining teeth and bone for enhanced stability

Denture-like bone-supported

Mimics a denture and is supported by bone

Bone reduction guide

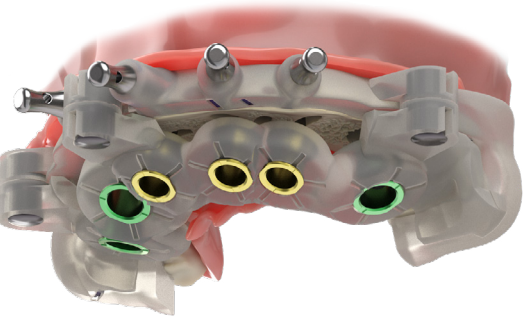
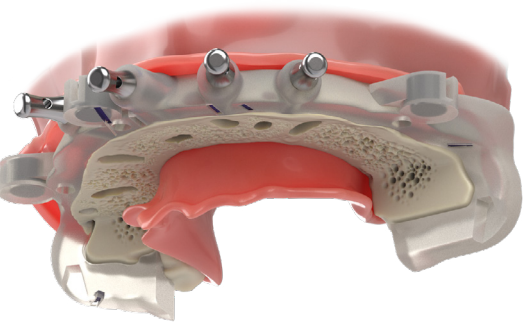
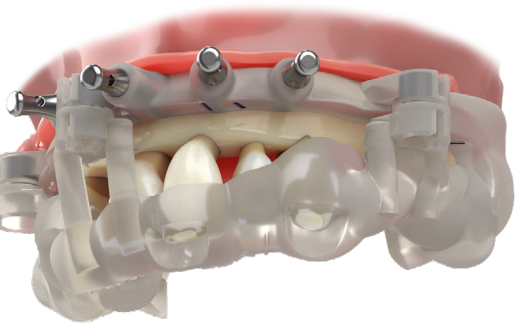
The bone reduction guide is used to guide alveolar bone reduction and is retained in the correct position on the bone/teeth via the fixation pins after the pin positioning guide is removed.

Implant guide

The implant guide snaps in securely on top of the bone reduction guide and is used to drill the implant osteotomies and to guide implant placement to the proper depth and hex orientation.

Provisional

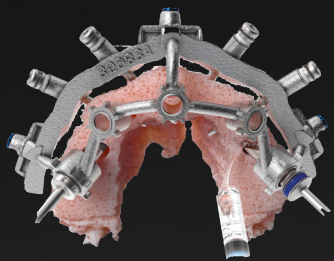
The provisional snaps on the bone reduction guide, following the multi-unit abutments and temporary cylinders placement. The provisional is stacked on the implants.





Full-arch solutions

# GuidedSMILE™



**CHROME GuidedSMILE™** features a metal fixation base and osteotomy guide. This attribute offers a smaller and stronger pre-planned full-arch solution, from surgery to the fabricated immediate load prosthesis.<sup>1</sup>

**GuidedSMILE LITE™** provides the same simplicity in an all-resin version of **CHROME GuidedSMILE™**.

**CombiGuide™** and **CombiGuide™ LITE** provides precise, pre-planned bone reduction and drilling guidance.

These patented guides, straightforward protocols and exceptional support enable seamless integration of GuidedSMILE™ into full-arch surgery practices.

Package options

The components included in each case vary depending on the package you choose.

**Chrome GuidedSMILE**

- Vulcan guides & components
- SurgiMAT
- Pin positioning guide
- Fixation base
- Osteotomy guide
- Carrier guide
- Provisional
- RAPID appliance
- Gasket and Plug set

- BioHorizons parts & restorative components
- Implants
  - Multi-unit abutments
  - Screws
  - Temporary cylinders

**CombiGuide**

- Vulcan guides & components
- Pin positioning guide
- Fixation base
- Osteotomy guide

- BioHorizons parts & restorative components
- Implants
  - Multi-unit abutments
  - Screws
  - Temporary cylinders

**GuidedSMILE LITE**

- Vulcan guides & components
- SurgiMAT
- Pin positioning guide
- Fixation base
- Osteotomy guide
- Carrier guide
- Provisional
- RAPID appliance
- Gasket and Plug set

- BioHorizons parts & restorative components
- Implants
  - Multi-unit abutments
  - Screws
  - Temporary cylinders

**CombiGuide LITE**

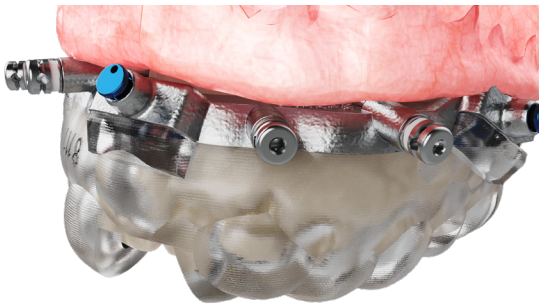
- Vulcan guides & components
- Pin positioning guide
- Fixation base
- Osteotomy guide

- BioHorizons parts & restorative components
- Implants
  - Multi-unit abutments
  - Screws
  - Temporary cylinders



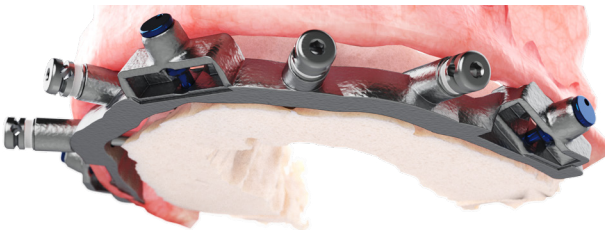
**Pin guide**

Expose bone with facial flap, seat pin guide with fixation base. Drill facial holes to depth, and remove pin guide from base.



**Fixation base**

Extract teeth. Reduce and smooth bone to the top coronal aspect of the fixation base.



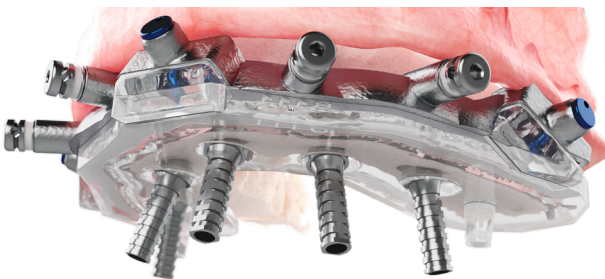
**Osteotomy guide**

Seat osteotomy guide. Drill and place implants per your implant system protocol of choice. Remove osteotomy guide from base.



**Carrier guide**

Seat carrier guide. Screw down MUAs and torque. Screw down temp cylinders and verify passivity with carrier guide.



**Provisional prosthesis**

Seat block-out gaskets and provisional. Block-out and back-fill cylinders, cure and adjust to finish.



Smile, your day  
just got easier!



LEARN MORE



SimpliSmile™ | **VULCAN**  
CUSTOM DENTAL

VULCANDENTAL.COM



V-ML0182 REV A MAY 2025