

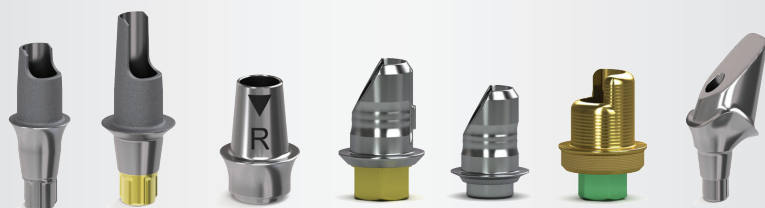
Finishing Tool for BioHorizons CAD/CAM abutments

SELECTING THE RIGHT FINISHING TOOL IS KEY TO ACHIEVING A PERFECT FIT TO YOUR BIOHORIZONS ABUTMENT.

BioHorizons recommends using a tool that meets the requirements to successfully mill the interfaces for BioHorizons CAD/CAM abutments.



Interfaces are designed
for an intimate fit with
the corresponding
BioHorizons abutment.



This finishing tool has been validated for use with all authentic BioHorizons Titanium Bases and for a split file design with custom abutments.

Cut Diameter:
Ø1mm

Tool Type:
Ballnose

Neck Length:
recommended:
14mm
minimum:
10mm

